

High Physical Security

Shear Holding Force 1200kg

Models

Mortice Model

Surface Mount Model

230mm (l) x 51mm (w) x 51mm (d)

Compact Design

Magnet - 163mm (l) x 30mm (w) x 35mm (d)

Armature - 163mm (l) x 30mm (w) x 32mm (d)

Specification

Built in PCB Controller

Switch selectable adjustable time delay 0-30 secs

Misalignment - Multiple auto relock x100

3 metre flying leads

Fully Monitored Hall Effect

Max 24vDC@1 amp

Door Position Switch

Versatile Installation

Single or Double Action Doors

Mortice / Surface / Glass Mount

Dual Voltage

12 or 24vDC

Current Consumption

Volts	Current - Activate	Current - Hold
12vDC	1150mA	250mA
24vDC	1550mA	110mA

Protection

Built in transient and reverse polarity protection

Max Armature Pull in

12vDC - 4mm

24vDC - 5mm

Accessories

For use with Surface Mount Housings

Aluminium Glass Mount Bracket suitable for 10-

12mm Glass, 230mm (l) x 30mm (w) x 45mm (d)

Filler Plates, 225mm (l) x 1/2/6mm (w) x 38mm (d)

CE Approved

Cycle Tested

SGS - 500k operations

Patented

USA / Taiwan / China

Patent applied for

UK

Warranty

5 years



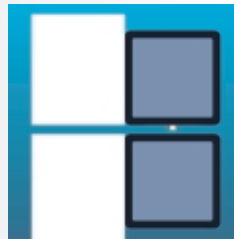
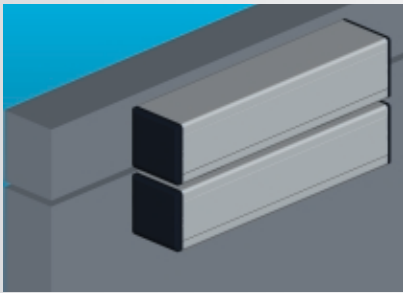
The Alpro EMS 1200 Compact Shearlock is available in Mortice or Surface Mount models (inc. Glass Mount) and offer slimline dimensions whilst maintaining a holding force in shear of 1200kg. Other benefits include built in PCB controller with switch selectable features and plug in 3 metre flying leads.



First Choice for Locking Solutions

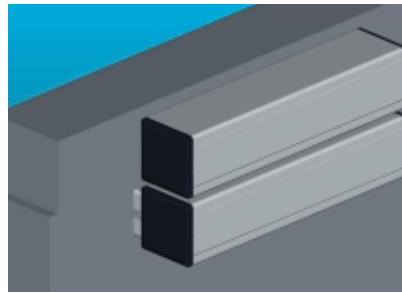
T 01202 676262 F 01202 680101 E info@iecltd.co.uk W www.iecltd.co.uk

Metal door to metal frame - flush



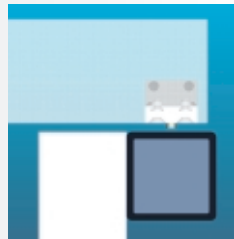
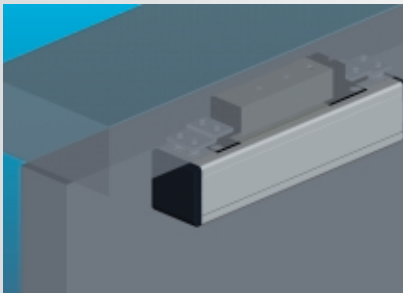
Side View

Metal door to metal frame - offset



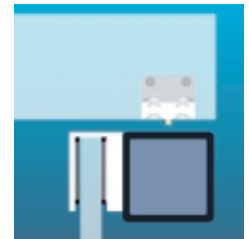
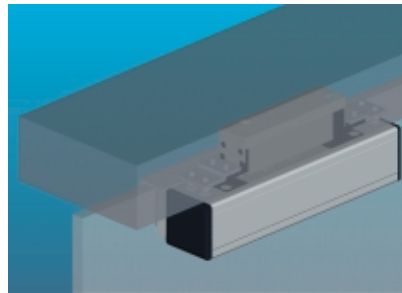
Side View

Metal door to metal frame



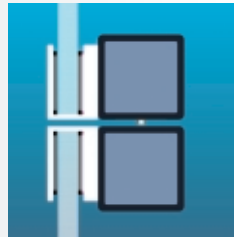
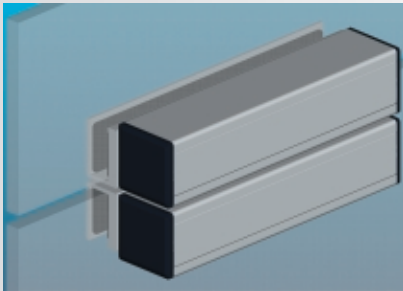
Side View

Frameless glass door to metal frame, Armature surface.



Side View

Frameless glass door to glass



Side View

SM 1200



GDC 1200



FP 1200-1/2/6



Ordering Information

DESCRIPTION	CODE
Mortice Shearlock -12/24VDC Door position Switch - Monitored complete with on board PCB/Plug in 3m flying leads	EMS 1200M
Surface Mount Shearlock as above complete with Surface Mount Housings x2	EMS 1200S
Mortice Shearlock as above complete with Surface Mount Housings x1	EMS 1200MS
Accessories	
Aluminium Frameless Glass (10/12mm) Door Clamp for use with EMS 1200S,	
One per Surface Mount Housing e.g. 2 required for use with EMS 1200S / 1 required for use with EMS 1200SM	GDC 1200
Aluminium Filler Plate 1mm thick x1	FP 1200 - 1
Aluminium Filler Plate 2mm thick x1	FP 1200 - 2
Aluminium Filler Plate 6mm thick x1	FP 1200 - 6
Regulated PSU/Back Up Battery	
12v 2Amp Power Supply Unit	
24v 2Amp Power Supply Unit	
7 amp hour battery for PSU back up	
Regulated PSU required for correct operation	IECPSU12V2AMP
Independent DPS (Door Position Switch) required for steel door applications	IECPSU24V2AMP
Suitable positive centring closer required on double action doors	IECNP7-12